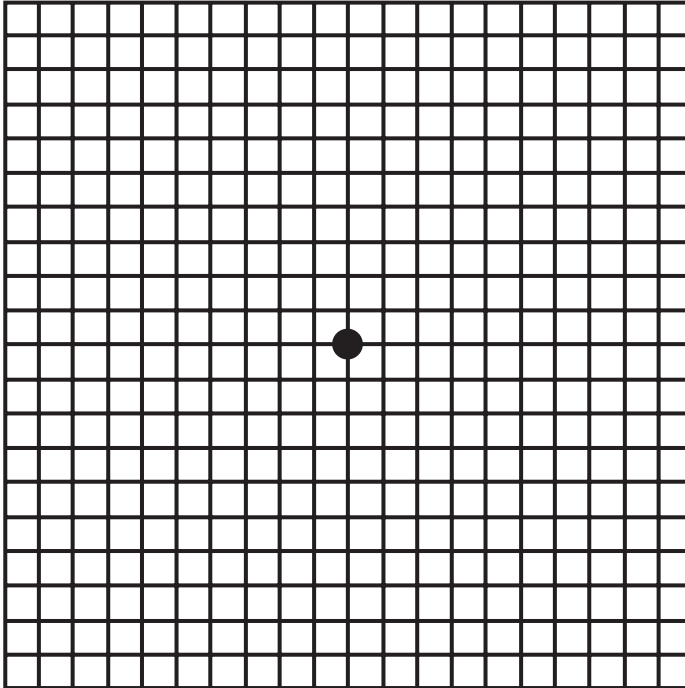


# Amsler Grid



Peel ↑

## Instructions

1. Attach this grid to a flat surface, such as a wall or refrigerator.
2. Stand about arm's length from the grid.
3. Put your glasses on, if you normally wear glasses for reading.
4. Cover one eye.
5. Focus on the dot at the center of the grid with the other eye.
6. If any lines appear wavy or distorted, or are missing, take note.
7. Repeat for the other eye.
8. If you noted any lines appearing wavy, distorted, or missing, contact your eye care professional.

Peel ↑

***REGENERON***